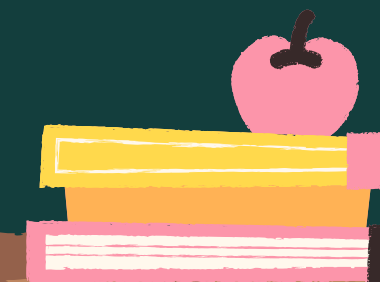




Croeso i Adran Tawe

Pontio Blwyddyn 2-3



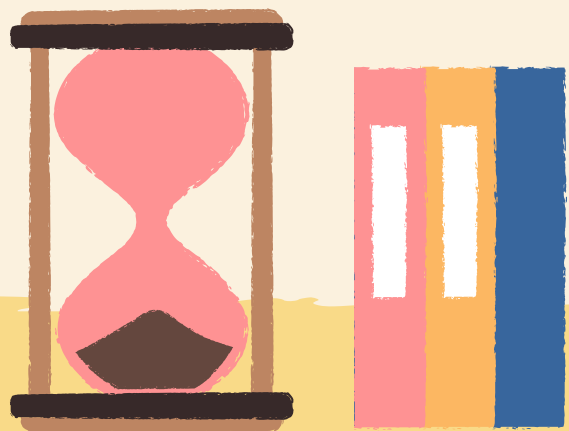


Cynnwys : Context

Miss Jones – The year 2 classroom.

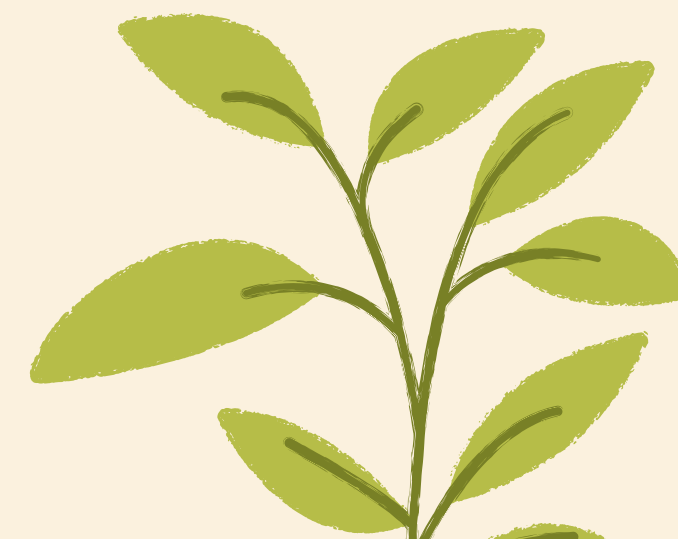
Miss James – The year 3 classroom.

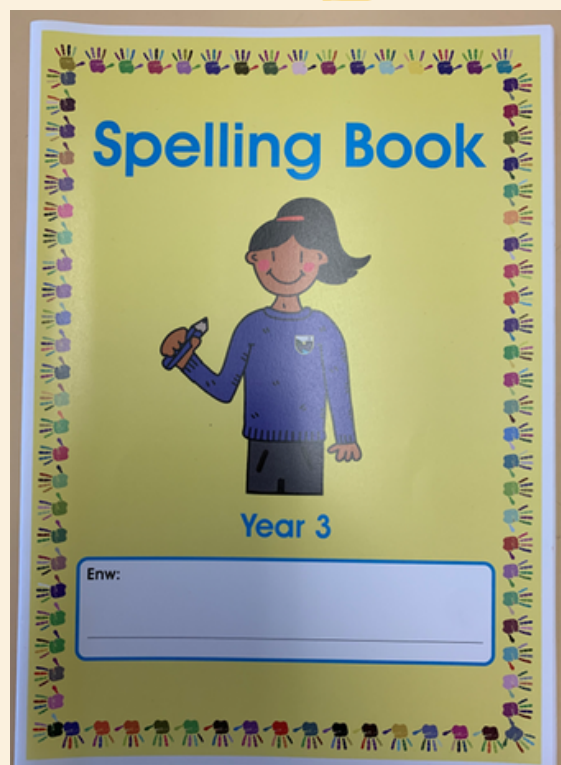
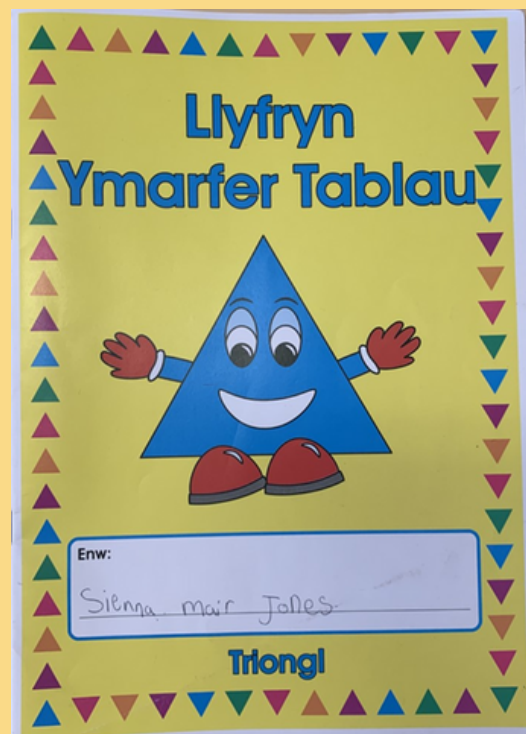
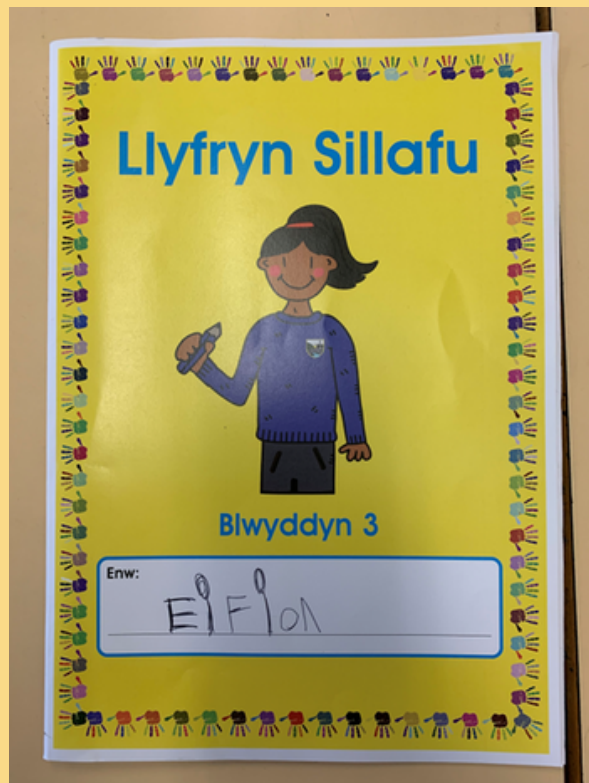
Examples of classroom tasks.



Blwyddyn 2 Year 2

- Continuous Provision /
Darpariaeth Barhaus
- Aled Afal
- Sgiliau / Skills





Gwaith Bore : Morning Work

The pupils will have 3 booklets to complete in the morning when they arrive at school.

1. Welsh Spelling
2. English Spelling
3. Times Tables Practice

Builds independency and a good routine to practice.

Mathemateg : Mathematics

In YGG Pontaradwe we follow a maths scheme called WhiteRose Maths. It has been designed by leading academic professors from around the country/world.

- In-depth learning of a skill.
- Real life context questions.
- Reasoning and procedural based questions.
- Blocks of learning split over the year covering all topics.
- End of block assessment.

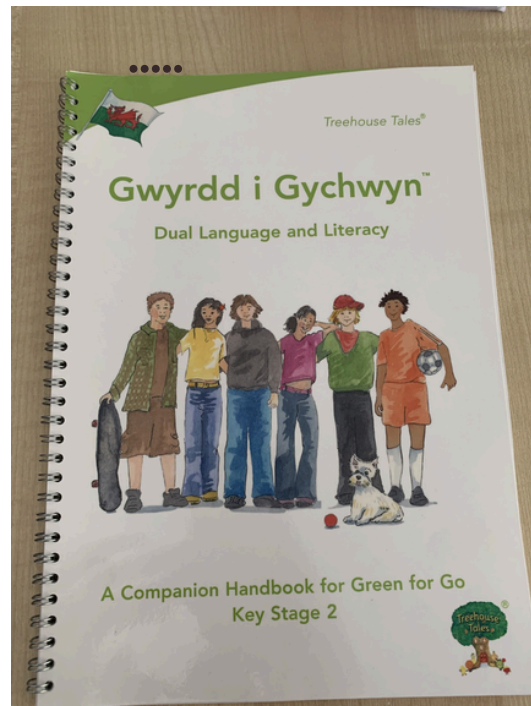
Cannoedd

1. Sawl balwn sydd?
Ysgrifennwch eich atebion mewn rhifau a geiriau.
Mae yna balwn.
Mae yna balwn.

2. Sawl bloc sydd?
Mae yna bloc.
Mae yna bloc.

3. Rhewch gylich o amgylch 800 pin.
a)
b)

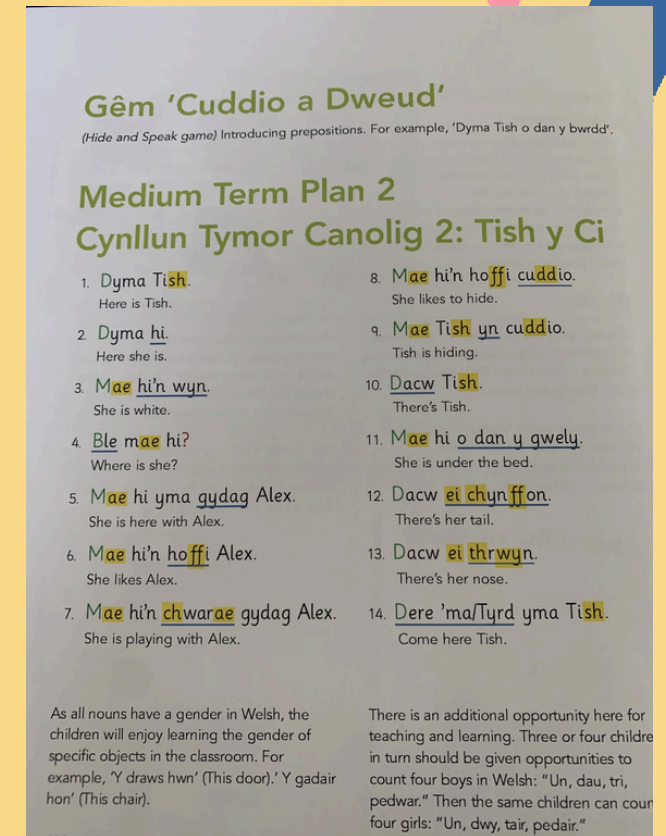
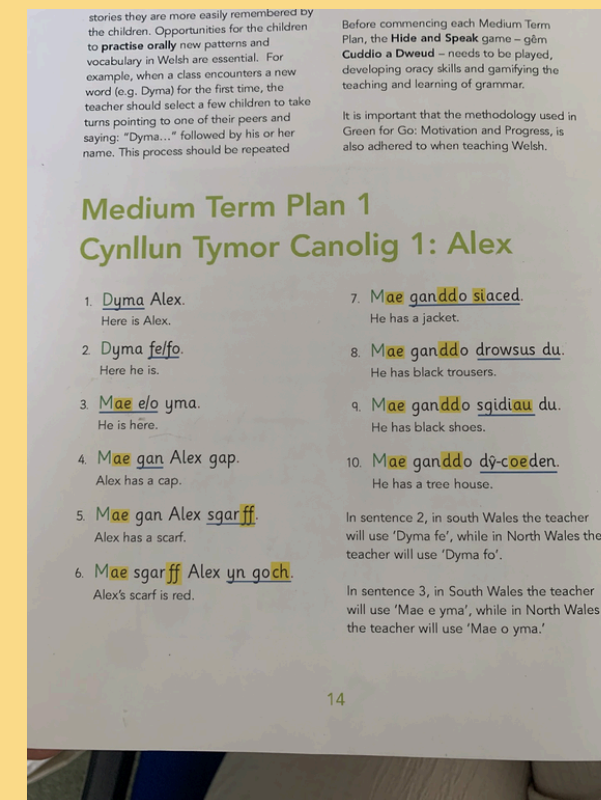
Aled Afal - Gwyrdd i Gychwyn



Aled Afal is an old scheme however has been redesigned and updated to include Welsh and English texts for children to practice their extended writing.

In derbyn/blwyddyn 1 a 2 it focuses on capital letters and punctuation before moving on to using descriptive language.

By the time they come to year 3 they have a strong understanding of those skills that we can build upon and introduce to the English writing. We start with Alex and then Tish the dog and then Alex's friends.



Cylchdro Thema a Darllen Thematic and Reading Rotations

We plan to include different elements of the curriculum but will always have Numeracy as our focus task and Literacy as another.

*Independency is key in these lessons due to the nature of a focus group and 4 other tasks. A lot of training goes into this in the first half term to get the pupils in a routine.

*All 5 groups are of a mixed ability and the pupils get the activity best suited to their level of learning. Throughout the year they met get a level higher or lower depending on the task.



George's Marvellous Maths

Aim: I have explored additive relationships, using a range of representations. I can add and subtract whole numbers, using a variety of written and mental methods.

Use your knowledge of addition, subtraction, handling money and telling the time to answer the questions.

Efelychu gwaith-Monet

Nod dwy'n gallu archwilio ac atbroffio ambynnod, a dangos rheolarth dechneogl

Efelychwrch ar waith Claude Monet "Waterlilies" Efelychwrch ei waith yn eich llyfrau thema.

Her- Ewch ati i mwed bach o waith ymchwil ar fy myd a gwaith Monet.

Super Sense Creature

Aim: I can produce designs to communicate my ideas in response to particular content.

Design your own super sense creature. Think about its special sense and how it's used to help the animal and possibly help others.

CHALLENGE: To digitalise your creature using IT technology.

How does it look like?

Creature's name and it's super sense.	How does it use it's super sense?	Where does the creature live?

Use your Senses

Aim: I can write legibly and fluently.

Look carefully at the pictures. Use your senses to describe what you can see, hear, feel, taste and smell. Remember to use full sentences. Include adjectives in your work.

Sensory See

Stand in the middle of the yard and observe what's around you. Fill in the diagram below with vocabulary and bullet points.

Aim: I can develop and apply a range of skills in familiar, unfamiliar and changing situations, organising space creatively in response to a variety of stimuli.

[illegible]

Roced Ffoneg : Phonics

Focus sounds: s a t p i n

tin nap sit tap pin

A tin pan.

A pin is in a tin.

Sip it.

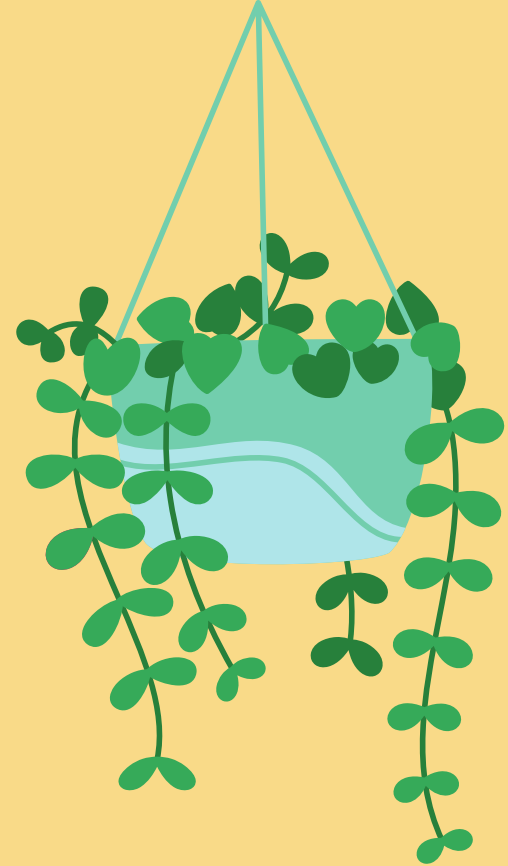
Is it a pan?

Lat lesson Review Sounds: air ear ure
s it unfair for the king to have so much?
I can see a pair of boots upstairs.
The rock is smeared with soil.
Do cars have gears?
Josh has manure at his farm.
Dad cooks mature beef over hot coals.



Diolch : Thank you

Unrhyw gwestiynau ?
Any questions ?



Year 3 Timetable

1. Morning work
 2. Language
 3. Morning play
 4. Maths
 5. Dinner Time
 6. Theme Work
 7. Home Time
- *Science, Music, PE, Art



Trefn y Dydd

- Gwaith Bore ☐
- Gwyddoniaeth ☐
- Amser Chwarae ☐
- Mathemateg ☐
- Cinio ☐
- Prawf Darllen Cymraeg ☐
- Amser mynd adref ☐

Dydd Iau 19eg o Fehefin
19.06.25

Relaxing Music Healing Stress, Anxiety and Depressi...

More videos