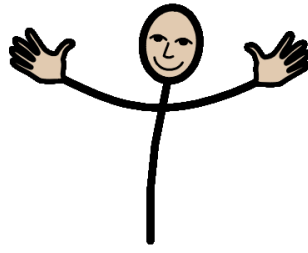


# Canolfan Myrddin



*'Small steps make big strides'*

## Prospectus



# Croeso!

Canolfan Myrddin is a truly special place — a nurturing, person-centred learning environment where every child is valued, celebrated and placed firmly at the heart of all we do.

Situated just a short walk from Carmarthen town centre, our specialist unit was established in 1975 and shares the school site with Myrddin County Primary School. The school is led by Headteacher, Mrs Nicholas, who oversees both the mainstream provision and Canolfan Myrddin. Day-to-day leadership of the unit is provided by Mrs McCumiskey, our dedicated Teacher in Charge.

In accordance with Local Authority guidelines, pupils are admitted to Canolfan Myrddin only through application to the Inclusion Panel held by the Local Authority inclusion department.

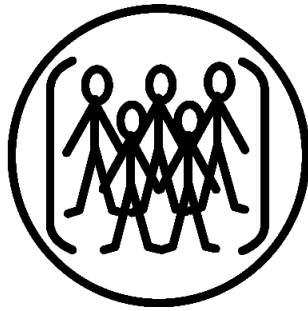
We support children aged 3 to 11 with Profound and Multiple Learning Difficulties (PMLD), Severe Learning Difficulties (SLD), and Autism. Each class benefits from a qualified teacher and a skilled team of teaching assistants, ensuring a high level of care, support, and personalised learning. Where appropriate, pupils also have opportunities to engage with the wider school community through inclusive activities with the mainstream classes at our school.

At Canolfan Myrddin, we pride ourselves on being a vibrant, joyful community where the needs, interests, and aspirations of our learners come first. We offer rich and engaging learning experiences designed to help every child take meaningful steps forward – because we believe that *'small steps make big strides'*.

Our Total Communication approach ensures that each pupil is supported to express themselves in a way that is effective and unique to them. We also place a strong emphasis on health, wellbeing, and personal development, offering a wide range of extra-curricular activities and celebrating every achievement, no matter how big or small.

We hope this prospectus gives you a helpful insight into life at Canolfan Myrddin. If you have any questions or would like to learn more, please don't hesitate to get in touch.

**Canolfan Myrddin**  
**Myrddin C.P. School**



## **Working Together**

We pride ourselves on our working partnership with families and professionals and we provide many opportunities for discussing how our pupils are progressing.

Meetings to discuss progress include annual person-centred reviews (PCR) as well as an open-door policy. The main aim of the annual person-centred review meeting is to celebrate successes, discuss any challenges and also to review, update and set outcomes for the year within each child's Individual Development Plan (IDP). We follow person centred principles to ensure that everybody has an equal voice during these meetings.

We use Class Dojo to share photos and to communicate with parents and carers. The information exchange between the class teacher and parents/carers is a helpful way of making daily links.

## ☀️ Our Vision at Canolfan Myrddin ☀️

At Canolfan Myrddin, we believe every child deserves the opportunity to thrive. Our dedicated team of staff work passionately to nurture each child's unique strengths, ensuring they flourish both academically and personally.

### Our Core Aims:

- 🎯 **Unlocking Potential** Every teacher is committed to helping pupils reach their full potential through tailored support and high expectations.
- 📚 **A Personalised Curriculum** We deliver a specially adapted curriculum, including the Curriculum for Wales, designed to meet the individual needs of each learner.
- 📊 **Progress Through Assessment** Regular assessments and meaningful target-setting help us track progress and celebrate achievements.
- 🏠 **Strong Home-School Partnerships** We value open communication with families and operate an open-door policy.
- 🤝 **Promoting Social Inclusion** We foster a sense of belonging and community, encouraging pupils to engage confidently with the world around them.
- 🧠 **Building Independence** Developing self-help skills and independence is key in preparing pupils for life beyond school.
- 🗣️ **Enhancing Communication** Where appropriate, we provide augmentative and alternative communication systems to support expressive and receptive language development.
- 🧑‍⚕️ **Collaborative Support** We work closely with external agencies such as the 0-25 Team, Physiotherapists, Occupational Therapists, and Speech and Language Therapists and Advisory Teachers to ensure holistic care is provided.
- 🧑 **Person-Centred Development** Every child is unique. We adopt a person-centred approach that places the pupil at the heart of all planning and decision-making.



## Our Staff

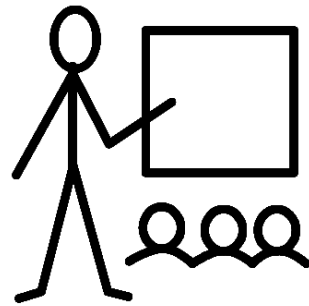
Canolfan Myrddin has a fantastic team of qualified, committed and enthusiastic staff. We are a large team and currently there are a large number of experienced, dedicated teaching assistants. All of our staff work together to create a positive and supportive learning environment for our learners. The level of support that we are able to offer the children at Canolfan Myrddin is significant; some children work with individual support whilst others have shared support in pairs or small groups.



## Our classes

| Class          | Number of Pupils | Age Range | Learning Needs   | Class Teacher  |
|----------------|------------------|-----------|--|----------------|
| Dosbarth Cothi | 7                | 3-11      | Profound, Multiple learning Difficulty (PMLD), Severe Learning Difficulties (SLD) and Autism | Mrs McCumiskey |
| Dosbarth Tywi  | 7                | 3-11      | Severe Learning Difficulties (SLD) and Autism  | Mrs Cousins    |
| Dosbarth Pibwr | 7                | 3-11      | Severe Learning Difficulties (SLD) and Autism  | Mrs Clarke     |
| Dosbarth Tâf   | 8                | 3-11      | Autism   | Mrs Thomas     |

Canolfan Myrddin is organised into four classes who work under the direction of the teacher in charge: **Mrs Fiona McCumiskey**.



## Our Curriculum

At Canolfan Myrddin, we offer a curriculum that is carefully designed to meet the individual needs of our pupils. We endeavour to do this whilst following the Curriculum for Wales which provides a cross curricular approach encompassing the six areas of learning and experiences (AOLEs), through thematic teaching. This includes a multi-sensory curriculum and specialist interventions and strategies.

The AOLEs that we cover are:

- .. *Language, Literacy and Communication*
- .. *Health and Well-Being*
- .. *Maths and Numeracy*
- .. *Expressive Arts*
- .. *Humanities*
- .. *Science and Technology*

Our curriculum is structured around four key areas of development:

### **Play**

Play is central to learning and development. Through play, children build attention and communication skills, explore emotions and creativity and develop socially. It is the foundation of all learning at Canolfan Myrddin.

### **Self-Help Skills**

We support pupils along a continuum — from full adult support to increasing independence. These essential life skills empower children to become confident and capable in their everyday routines.

## **Language and Communication**

We embrace a Total Communication approach, supporting every child to express themselves in a way that is meaningful and individual to them. This includes a wide range of verbal, non-verbal, and alternative communication methods.

## **Academic Learning**

In line with the Curriculum for Wales, we are developing a bespoke and relevant curriculum that promotes the Four Core Purposes. Learning is delivered through rich, authentic experiences tailored to each pupil's developmental stage and potential. Teaching is flexible, delivered through individual or group work, and progress is guided by each child's unique abilities.

Pupils are predominantly taught through the medium of English and second language Welsh is introduced and used where and when appropriate. The Welsh Language Charter is adopted at the unit incidentally and socially for all pupils.

All pupils have experience of Religious and Values Education embracing the multi-cultural society in which we live. We provide opportunities to explore individual thoughts as well as appreciation of the natural world. In school, collective worship is non-denominational in character. A wide range of festivals are celebrated.

## **Specialist Interventions**

Our experienced and highly trained staff deliver a range of targeted interventions to support communication, literacy, emotional wellbeing, and social development:

- **Intensive Interaction** - developing early communication and engagement
- **Phonological Awareness** - building pre-language foundations
- **Read Write Inc. (RWI)** - supporting reading and writing
- **Talk About** - enhancing social communication skills
- **LEGO Therapy** - promoting teamwork and problem-solving
- **Alternative Communication Systems** - tailored to individual needs
- **ELSA (Emotional Literacy Support)** - nurturing emotional wellbeing

### **Enriched Provision for Holistic Development**

We believe that learning goes beyond the classroom. Our pupils benefit from a wide range of specialist resources and experiences that support their physical, emotional, and sensory needs:

- Input from specialist teachers (e.g. Hearing Impairment/Visual Impairment/ Multi-sensory Impairment)
- Adaptations for access to the ICT curriculum
- Multi-sensory environments: white room, UV room, soft play, therapy areas
- Physiotherapy monitored by specialist physiotherapists
- Hydrotherapy in our on-site spa pool
- Adapted outdoor play spaces
- School minibus for community access and inclusion

We also offer exciting enrichment activities that promote confidence, independence and joy:

- Weekly swimming sessions at the local leisure centre
- Horse riding
- Skiing and sit-ski opportunities
- Bikeability
- Surfability

At Canolfan Myrddin, we are proud to provide a curriculum that is as unique as each child we support — one that inspires, empowers, and celebrates every child.



## Organisation

### **Terms**

Canolfan Myrddin follows three statutory terms as decided by the authority.

### **School hours**

Breakfast Club: 8.15am-9am

Morning session: 9.00am—12 noon

Afternoon session: 1.15pm—3.00pm



## Uniform

The wearing of uniform is encouraged in order for the children to feel part of our whole school community. Some pupils like to wear uniform as it helps them to understand more about which days are school days and which are weekends and holidays. Parents are asked to mark all clothes and belongings with their child's name. In the interests of health and safety, no jewellery is permitted.

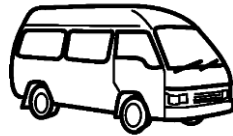
### **School uniform:**

Red sweatshirt or cardigan

White polo shirt

Black/grey trousers or jogging bottoms, skirts/pinafore dresses

*We appreciate that some children may find wearing certain items of our school uniform a challenge due to sensory needs and in these instances, we are flexible.*



## Transport

Carmarthenshire county council provides transport for children who attend Canolfan Myrddin, dependant on the distance they live from the school. Any changes in transport arrangements should be made through agreement between parents and the county ALN Transport Department with the school being informed. The wearing of seat belts is compulsory on all school transport.

For information and to apply for transport for you child, please contact:

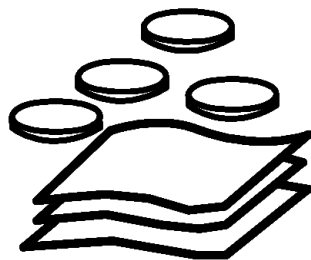
- ALN Transport - 01267 228323 / 01267 228317
- Anwen Cray, Network Management  
Technician [AECray@carmarthenshire.gov.uk](mailto:AECray@carmarthenshire.gov.uk) 01267 228297
- Judith Emanuel, Inclusion  
Team [JEmanuel@carmarthenshire.gov.uk](mailto:JEmanuel@carmarthenshire.gov.uk)



## Healthcare Needs

In cases where a child has an ongoing healthcare need, the school alongside parents and medical professionals, will create a Healthcare Plan (HCP). This will include sharing important information with the relevant people.

Medication can be administered in school by nominated staff providing that medicines are relevant, in-date, correctly labelled with dosage and administration instructions and written permissions received from parents or carers. School staff will keep a log of when medication is administered.

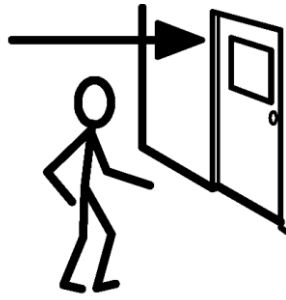


### **PTFA - Myrddin Special Children's Group**

Charity Number 1051356

Our Parents, Teacher and Friends Association is a registered charity. We are a dedicated team and work very hard to raise money for our specialist unit! Over the years the children have benefitted greatly from the fantastic fundraising that our PTFA have done. Successful fundraising has supplied new toys, outdoor equipment, climbing frames and a brand-new playground with specialist equipment to name a few!

If you would like more information about how to get involved with the PTFA please contact Mrs McCumiskey.



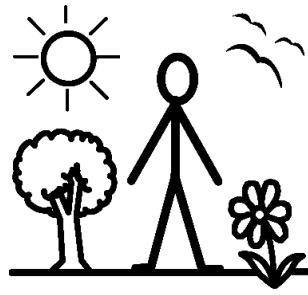
## **Attendance**

Regular attendance to school is essential in order for your child to make the best possible progress. If your child is unwell, please inform the school via Class Dojo, email or telephone on the morning of the child's absence. If the illness continues for some time, parents should keep the school informed about their child's health. It is also the responsibility of parents to inform the transport company that brings their child to school to let them know if your child is absent.



## **Equal Opportunities**

At Canolfan Myrddin, we believe that everyone has the right to be given the opportunity to achieve their full potential regardless of race, gender or disability. We consider that discrimination on any grounds is offensive and will act positively against any form of prejudice.



## Enrichment

Educational visits are an important part of the vibrant curriculum experience and provide opportunities to enhance learning and encounter new situations outside the school environment.

The educational visits enrich our curriculum topics.

All visits are carefully planned on an individual pupil basis and risk assessments support the safety of all learners.

Parents and carers are informed and voluntary contributions may be asked for.



We are fortunate to have a school minibus on site which is used for visits to enrich the children's learning experiences in the local community. Some of the places that we visit on a regular basis are local parks, shops, cafes, Bike Ability, Horse Riding, skiing, museums and swimming lessons to name a few!



## Safeguarding

Canolfan Myrddin aims to provide an environment in which pupils feel safe, secure, valued and respected. The school fully recognises the contribution it can make to protect and support the pupils in its care.

The school security is of utmost importance. Strangers are not allowed to enter the school unannounced and all outside doors are kept locked or security protected so that access is controlled at all times. Visitors are required to sign in electronically and wear a visitor's badge.

The governors and staff are committed to ensuring a high standard of health and safety and welfare for all pupils, staff, and visitors. The school has a comprehensive policy to this effect.

The school is committed to safeguarding and promoting the health and wellbeing of staff, children and young people. There is a Child Protection Policy in place which aims to make explicit the school's commitment to the development of good practice and sound procedures and its purpose is to ensure that child protection concerns and referrals are handled sensitively, professionally and in ways that support the needs of the child.

*The Designated Safeguarding Officer is: Mrs Nicholas*

*The Deputy Safeguarding Officers are: Mrs McCumiskey and Mrs Bound*



## Contact Details

**Headteacher:** Mrs O Nicholas

**Teacher in Charge at Canolfan Myrddin:** Mrs F McCumiskey

*Heol Disgwylfa*

*Carmarthen*

*SA31 1TE*

Tel: 01267 235655

Fax: 01267 232633

email: [admin@myrddin.ysgolccc.cymru](mailto:admin@myrddin.ysgolccc.cymru)

All school policies can be found on our website:

[https://www.myrddin.ysgolccc.cymru/en\\_GB/myrddin-unit/](https://www.myrddin.ysgolccc.cymru/en_GB/myrddin-unit/)

If you have any questions of need further information, please feel free to contact the school.

Diolch,

Mrs McCumiskey (Teacher in Charge)