



Cilffriw Primary School
Ysgol Gynradd Cilffriw
Tel: 01639 630816
Email: cilffriw@npt.school



Cilffriw Primary School

Prospectus

2023-2024

Headteacher: Mr. Mark Quin

Chair of Governors: Mr. Craig Storey

“Cilffriw Primary provides a caring and inclusive environment that values all pupils and recognises their individual contributions. All have equal opportunity to participate in lessons and the wider life of the school.”

Estyn Report June 2015





Cilffriw Primary School
Ysgol Gynradd Cilffriw
Tel: 01639 630816
Email: cilffriw@npt.school



Welcome to Cilffriw Primary School

Croeso i Ysgol Gynradd Cilffriw

Name of school:	CILFFRIW PRIMARY SCHOOL
Address:	PENSCYNOR, NEATH, SA10 8LF.
Telephone No:	01639 630816
Headteacher:	Mr. Mark Quin
Deputy Headteacher:	Mrs. Natalie Lambert-Jones
Community/Voluntary/Welsh:	Community
Co Educational/Boys/Girls/Primary:	Co-Educational
Age range of pupils:	3 - 11+ years
Number on Roll:	160
D.E.S. Number:	671 2230
Chairman of Governors:	Councillor Mrs. Doreen Jones

This information is correct and up to date at the time of printing: September 2022



Cilffriw Primary School
Ysgol Gynradd Cilffriw
Tel: 01639 630816
Email: cilffriw@npt.school



Dear Parents/Carers,

Welcome to Cilffriw Primary School.

Choosing the right school for your child is vitally important. Parents and carers want their children to receive the best education possible in a happy and secure environment. We are confident that we offer a safe and happy school with the highest standards of education and care.

We are proud of the warm and welcoming atmosphere always evident in Cilffriw School. Children are greatly valued and nurtured from the time they enter our nursery so that they experience success in their learning and in their personal growth.

We value our excellent relationships with parents and carers and place importance on forming strong partnerships with you from the start of schooling.

Whether your child is beginning at Nursery or joining us later on, we hope the years spent here will be happy and successful. The information in this booklet is intended to help introduce you and your child to our school.

If you would like any policy documents please ask at the school office.

I am sure you will have questions to ask which can only be discussed personally so please contact me at school and I will be delighted to meet with you and your child.

Yours sincerely,

Mark Quin
Headteacher



Cilffriw Primary School
Ysgol Gynradd Cilffriw
Tel: 01639 630816
Email: cilffriw@npt.school



THE SCHOOL GOVERNORS

Governors serve for a period of four years. Parent Governors bring the valuable views of parents to the governing body. However, they are not delegates for parents, as they speak and act as individuals. If you wish to contact any of the governors you may get in touch via the school.

Chairman of Governors: Mr. C. Storey

L.E.A. Representatives: Mrs. J. Cook

Parent Governors: Mrs. C. Brown
Mr. S. Thomas

Community Governors: Mr. R. Lewis

Teacher Governor: Miss L. Lloyd

Staff Governor: Mrs. C. Howells

Headteacher: Mr M. Quin
Clerk to Governors Mrs. S. Horrell



Cilffriw Primary School
Ysgol Gynradd Cilffriw

Tel: 01639 630816

Email: cilffriw@npt.school



TEACHING STAFF

Mr M. Quin	Headteacher
Mrs A. Barnes	Year 6
Mr. S. Tay	Year 5
Mrs. L. Lloyd	Year 3/4
Mrs. N. Lambert-Jones	Year 2/3 and Deputy Headteacher
Mrs. C. Davies	Year 1
Mrs. B. Goss	Nursery and Reception
Mrs. N. Williams	Speech/Language Class (Lower) and ALNCo
Mrs. A. Williams	Speech/Language Class (Upper)

SUPPORT STAFF

Miss K. Davies	School Clerk
Mrs. J. Beynon	Teaching Assistant
Miss T. Rees	Teaching Assistant
Mrs. R. Colwill	Teaching Assistant
Mrs. S. Jackson	Teaching Assistant
Mrs. R. Jones	Teaching Assistant
Mrs. C. Howells	Teaching Assistant
Miss A. Jones	Teaching Assistant (S & L Class)
Mrs. N. Nicholson	Teaching Assistant (S & L Class)
Mr. R. Jones	Caretaker
Mrs. J. Sutcliffe	School Cook
Mrs. M. Saunders	Lunchtime Supervisor
Mrs. J. Williams	Kitchen Assistant
Mrs. S. Walters	Kitchen Assistant
Mrs. C. Owens	Cleaner
Mrs. A. Godding	Cleaner
Miss. L. Ashford	Cleaner



Cilffriw Primary School *Ysgol Gynradd Cilffriw*

Tel: 01639 630816

Email: cilffriw@npt.school



SCHOOL DESCRIPTION AND ORGANISATION

Opened in September 1980, the building is planned along a split - level semi open - plan design. The school has ten classrooms, including a self-contained nursery unit. Each pair of classrooms opens onto a practical area. There are rooms for quiet work, shared libraries, a computer suite and a multi purpose hall. The administrative level has a Headteacher's room, clerk's office and staff room. There are also male and female changing rooms and a small shared room currently used by a speech therapist and assistant who work with the Speech and Language Classes. The school is generally very well resourced.

Set in beautiful surroundings, the school has a very large campus consisting of landscaped areas, shrubberies and flower beds, three hard surface playgrounds, a nature trail with a fixed playground, a conservation area with a pond, meadow and woods plus a large sports field with established hedgerows and trees. On the negative side, we do have many stairways and steps.

The catchment area consists of the village of Cilffriw including Penscynor, the village of Aberdulais, and both sides of the main Neath Valley trunk road from Llangatwg to Ynysygerwn. Property consists of a variety of traditional private dwellings, four modern private housing developments, a council housing estate at Cilffriw and a housing association estate at





*Cilffriw Primary School
Ysgol Gynradd Cilffriw*

Tel: 01639 630816

Email: cilffriw@npt.school



THE SCHOOL AIMS:

To value every child and to recognise their individuality and all-round needs.

To provide a safe, secure and stimulating environment where children are encouraged to respect diversity.

To promote the development of lively, enquiring minds and the confidence and self esteem to enable children to become independent learners.

To provide a broad, balanced and differentiated curriculum which ensures continuity and progression.

To ensure that pupils are challenged and encouraged to work hard so that each child experiences success.

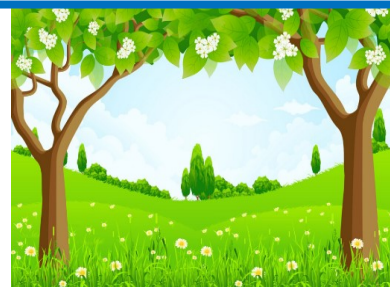
To encourage an awareness and concern for the immediate environment and world in which we live.

To enjoy mutually supportive relationships with parents and the community.





Cilffriw Primary School
Ysgol Gynradd Cilffriw
Tel: 01639 630816
Email: cilffriw@npt.school



THE SCHOOL CURRICULUM

Nurturing, inspiring and enabling life-long learning

In Cilffriw Primary school, our aim is to provide a curriculum that is based on three principles:

- All staff form warm and nurturing relationships with our pupils. Pupils feel safe, respected and understood as individuals, so that they are happy in school and have their individual learning needs met.
- Our curriculum provides pupils with experiences that are engaging and thought provoking. The curriculum is centred around the teaching of concepts that engage pupils in learning about our world as it is today, to give pupils a sense their own identity and belonging in their local area and Wales, and to develop their beliefs, attitudes and values as citizens of the World.
- Our school environment is well-resourced and effective in developing the curriculum. Classrooms are organised to allow pupils to work in groups and independently, with a wide range of resources that they can choose to support their learning. We also use our extensive grounds and beautiful locality as part of our teaching environment.

Our School Curriculum

Senior leaders, staff, pupils, parents and carers have worked collaboratively to develop a shared vision for the curriculum that we have developed at Cilffriw Primary School. We are fully committed to the Curriculum for Wales and our school curriculum meets the required elements as set out in the national framework. Our curriculum is designed to ensure that pupils develop the four purposes of being Ambitious Capable Learners; Enterprising Creative Contributors; Ethical Informed Citizens and Healthy Confident Individuals.



Cilffriw Primary School
Ysgol Gynradd Cilffriw
Tel: 01639 630816
Email: cilffriw@npt.school



THE SCHOOL CURRICULUM

Our curriculum is progressive, focused on ensuring that pupils are continually developing:

- Control and independence in their literacy, numeracy, digital and integral skills.
- Sophistication and depth in their knowledge and understanding of Science and Technology; Health and Wellbeing; Expressive Arts and Humanities.
- Confidence and fluency in their thinking skills: their ability to be analytical, evaluative and creative in their approach to learning.

Learners will develop an understanding of all What Matters statements as part of a broad and balanced curriculum. Pupils will explore the What Matters statements through broad concepts such as "Power" and "Change" to ensure that they make meaningful links in their learning across the six Areas of Learning Experience. Our curriculum ensures that learners will regularly revisit the What Matters statements so that they develop more sophisticated understanding of the key knowledge, ideas and principles involved in each Area of Learning Experience.

Assessment at our school enables learner progression as it is focused on supporting learners to move forward with their learning on a day-to-day basis and identifying, capturing and reflecting on learners' progress over time. Formative assessment takes place daily, led by teacher observations and record-keeping. Pupils are involved in assessing their own work and identifying improvements as part of this process. The school uses a calendar of summative assessments that focus on pupils' phonological, reading, spelling, writing and mathematical skills. This ensures that all pupils progress in their learning with appropriate challenge and support.

The school will monitor the impact of its curriculum on pupils' progression and the development of the four purposes throughout the academic year and will complete a formal review on an annual basis.

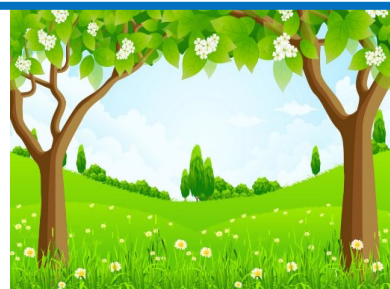


Cilffriw Primary School

Ysgol Gynradd Cilffriw

Tel: 01639 630816

Email: cilffriw@npt.school



THE SCHOOL CONTEXT

Essential knowledge, skills and understanding are developed inside and outside classrooms where teachers are knowledgeable and skilled and able to utilise a range of teaching strategies to promote effective learning. Whole class teaching, group or individual teaching, investigative or didactic methods are all appropriate at sometime or another. In the mornings, teaching is focused on the National Literacy and Numeracy Frameworks so English and Mathematics take important priority.

Throughout the school, the discipline is firm and applied in an atmosphere of warmth and security. Children are happy coming to school.

At present, pupils are organised in single age classes of mixed ability. Class sizes vary but as a general policy the school tries to ensure that these are kept to a manageable size of up to 30 if possible. However, where this is impossible, we do our utmost to provide support. Curricular planning is carried out collectively at the beginning of each term and teachers with support staff, meet frequently to capitalise upon each other's strengths and expertise so that a shared understanding of children's needs is developed and progression is clear.

Communication with parents and the community is given high priority. Parents are genuinely welcome at Cilffriw.

PASTORAL CARE

Class teachers have responsibility for the pastoral care of every pupil within their class. Overall responsibility is assumed by the Headteacher in consultation with individual teachers. Children's personal and medical details are kept on file in the school office and in the event of a significant illness or injury during the school day, telephone contact is made with a child's parents, carers or named contact to notify them of the situation. Arrangements are then made for the child to be collected or taken home from school. If parents or other contacts are unavailable, the pupil is kept at school and the staff endeavour to make the situation as comfortable as circumstances allow. Serious cases will obviously mean immediate contact with the emergency services, e.g. ambulance service.

Members of staff hold a current Certificate of First Aid and this is kept to date on a rolling programme. All staff are aware of and receive training in child protection procedures. Training in Epipen use and dealing with epilepsy and diabetes is completed routinely.



Cilffriw Primary School
Ysgol Gynradd Cilffriw
Tel: 01639 630816
Email: cilffriw@npt.school



SUPPORT SERVICES

The Child Health Department makes annual vision, weight and height inspections of all Reception Class pupils. Hearing checks are made every two years and otherwise when necessary. Any speech and language difficulties are referred to the Speech and Language Support Service. When necessary, referrals are made to the Education Welfare Service and Schools Psychological Service. Parents are always consulted before any referrals are made and school and home work together for the wellbeing of the child.

SECURITY / HEALTH AND SAFETY

The school's Health and Safety and Traffic Management Policies comply with the local authority's guidelines. The security of pupils, staff and visitors is the school's highest priority. Procedures are closely followed to ensure that the building is secure at all times. Outside doors are kept locked and only adults open them. Visitors are asked to report to the School Office and to sign in then wear a visitor's pass. All staff and visitors are made aware of the school's Safeguarding and Child Protection Policy. Fire drills are held at least once a term. Fire alarm systems and emergency lighting are checked weekly. P.E. equipment is checked regularly on a weekly, termly and annual basis.

CHILDREN WITH ADDITIONAL LEARNING NEEDS

Children sometimes have specific or general learning difficulties, emotional or behavioural difficulties or a physical disability. Some children may have a high level of ability in some area which requires more stimulating extension work to stimulate. Most pupils can be effectively supported through Inclusive Learning Provision, using strategies such as Rapid Reading or Emotional Support. If their level of need requires a higher level of support, it may be necessary for a child to be issued with an Individual Development Plan in agreement with parents. This plan will include targets that are reviewed twice a year with parents.

The local education authority can adopt an Individual Development Plan if the child's needs require greater support than can be provided by the school, or if there is funding required to provide additional hours of support from a teaching assistant. Local Authority IDPs are reviewed annually in a formal meeting with parents. Pupils who have Local Authority IDPs sometimes require a specialist placement, such as in a speech and language unit or unit that supports pupils with autism.

All pupils who have been identified as having additional learning needs are placed on the schools ALN Register and are given extra help on a regular basis. Mrs. Natasha Williams is our school ALNCO and works systematically with all staff and the head teacher.



Cilffriw Primary School
Ysgol Gynradd Cilffriw
Tel: 01639 630816
Email: cilffriw@npt.school



SPEECH AND LANGUAGE CLASSES

We have two classes at Cilffriw, specifically designed for children with speech and language difficulties. Places at these classes are planned and allocated by Neath Port Talbot Education Authority and children are taxied in from other areas according to need. The eighteen children within the Unit classes are taught by specialist teachers and qualified assistants. They benefit also from speech therapists who are in school for two days every week and from a speech therapy assistant who works in school for a day and a half each week. Children integrate into mainstream classes as appropriate with the support of the staff. We are proud of our inclusion policy at Cilffriw.

ATTENDANCE

All children are expected to attend school regularly, arriving on time at the beginning of the school day and leaving promptly at the end of the day or following after-school clubs. We stress to all parents the crucial importance of regular, uninterrupted attendance and request that children are never kept at home for trivial reasons.

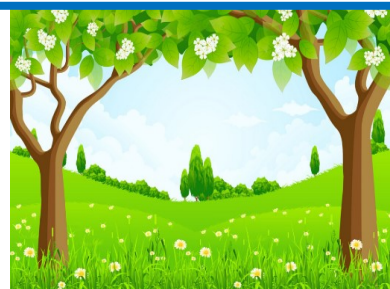
If possible, parents are asked to notify the school beforehand if children are required to leave school during the school day. Children's attendance is monitored carefully by the school and home visits are made by the Educational Welfare Officer in the event of frequent or long-term unexplained absence. All absences should be explained by a telephone call or a note on return to school.

Currently the school day begins at 8.50 a.m. and finishes at 3.20 p.m.

Nursery sessions are from 8.40 a.m. to 11.30 a.m.



Cilffriw Primary School
Ysgol Gynradd Cilffriw
Tel: 01639 630816
Email: cilffriw@npt.school



SCHOOL DISCIPLINE

We aim to create a happy and secure environment where our children can play, work and live together. Our emphasis is that each child must develop self discipline, social awareness and responsibility. Our behaviour policy stresses the need to encourage positive behaviour and the vast majority of our pupils behave very well with a secure sense of self worth and wellbeing.

Discipline is the overall responsibility of the Headteacher in consultation with parents and with the co-operation of all members of staff.

Each class teacher and TA upholds the school rules and teachers are responsible for maintaining discipline in their class. We believe collectively in a positive approach through encouragement and the development of self-discipline is considered to be crucial. When correction is necessary it takes the form of discussion and apology if appropriate. Further sanctions when necessary involve a loss of privileges which may vary according to the individual interests of children. Referral to the deputy Headteacher or to the Headteacher may be necessary. The school is concerned to work in close co-operation with parents in order to avoid any serious problems.

ANTI BULLYING

Bullying of any description is not tolerated and dealt with immediately. An effective anti-bullying policy is in place. A copy of this is available at the school office and on the website.

ADMISSION PROCEDURES

Our Admission Policy is in line with that of the local authority and a copy may be collected from the school office. All applications have to be submitted through the Local Authority - Neath Port Talbot.

BEGINNING AT NURSERY

Our nursery is a place of warmth, welcome and happiness in a busy purpose-built play environment. Before entering Nursery, a letter of invitation is sent to the child inviting them to visit. In fact, parents and little ones are welcome to drop in occasionally in order to ease the transition from home to school. In this way, we find that children and parents get to know our teacher and support staff early on in a natural, informal way.

A meeting is held with the Headteacher and teacher when children are nearing three years of age, although many parents of young children make appointments to come and see us and to have a tour of the school long before this and this informal contact is very much encouraged.

Please ensure that your child is fully toilet trained before starting nursery. Nursery staff are able to change children after occasional accidents, however we do not have the appropriate facilities or staffing levels to do this on a regular basis if a pupil is not toilet trained.



Cilffriw Primary School *Ysgol Gynradd Cilffriw*

Tel: 01639 630816

Email: cilffriw@npt.school



TRANSITION TO FULL TIME SCHOOL

An informal transition meeting is held every July for future Reception parents in order to discuss full time school procedures. We find that the vast majority of our parents take up a full time place at Reception class although we do allow flexibility in accordance with parents' wishes.

In accordance with the Welsh Assembly Government guidelines, we have implemented the Foundation Phase of Learning into our early years classes. In practice, this means that we have a high ratio of staff to children (8 - 1) and a quality play and experience-rich curriculum. Children are active in their own learning inside and outside the classrooms.

BILINGUALISM

Welsh is taught as a second language. The school is pleased to follow schemes and resources recommended by the Local Authority and the Welsh Language is given a prominent status within Cilffriw School. Our aim is mainly concerned for confidence in oral work leading to a level of proficiency for pupils. Increasing emphasis will be placed on reading and writing skills throughout school.

It is the school's aim to use the Welsh language in such a way as to ensure that children hear, see and use the language as a natural and integral part of school life. Children will also have opportunity to learn about the culture and heritage also. We are proud of our country and wish to be active in promoting the Welsh language and life as part of *Y Cwricwlwm Cymreig*.

Our teaching is supported by regular, half-day visits by our 'Athrawes Fro', a Welsh advisory teacher.

ABOUT THE SCHOOL

The Curriculum

In the early years of Nursery and Reception, it is recognised that children need a play curriculum rich in practical experiences. These are carefully organised in order to provide a sound foundation for later learning. Teachers work together to ensure that the Foundation Phase curriculum is fully covered with a high ratio of staff to children.

From Year One, we aim to present to our pupils a broad, balanced curriculum which includes all aspects of learning. As a school we believe that a balanced approach is essential. Interactive teaching of English and Mathematics direct the morning's curriculum. Careful attention is paid to the important skills of literacy, numeracy, bilingualism and I.C.T. Support is provided for those pupils who may require help to learn.

Whenever appropriate, we take pupils to relevant places of interest to enrich their experiences, understanding and growing awareness.



Cilffriw Primary School
Ysgol Gynradd Cilffriw
Tel: 01639 630816
Email: cilffriw@npt.school



Homework Policy

From the earliest days of nursery, we encourage children to borrow story books and request that parents read with their children at home. This partnership between teachers and parents is valuable in promoting early literacy. Regular written homework, usually given once a week, increases through Key Stage One and Two. Again, we value parental involvement in this, so that pupils develop the self discipline necessary for personal study and more importantly, a love of learning that is embedded at the earliest years of school. Please read our Teaching and Learning Policy.

Personal Health and Social Education / Sex and Relationship Education

The school has a policy which begins at nursery and continues throughout school. Topics are dealt with in a sensitive and factual manner often through circle times. Children are taught to value each other. Visitors including the liaison police officer, the school nurse, the road safety team, fire officers, etc, frequently work with our pupils.

In accordance with the Education Act, Sex Education is taught at this school in liaison with the school nurse as the topic progresses more formally through Year 6. Our policy has been approved by the Governing Body.

Religious Education

The Syllabus is based upon the Christian Faith although other faiths, Hinduism and Judaism are explored. Pupils are taught to reflect and empathise in order to develop into caring, tolerant individuals.

Collective Worship

Daily assemblies and classroom quiet times are an important part of the day. These offer pupils experiences of contemplation and prayer based on the Christian Faith. Biblical and moral readings, poetry, prayers and hymns are typical aspects of our school worship. Parents may exercise their right to withdraw children from R.E. and assemblies. Appropriate arrangements are made to teach any withdrawn pupils.

Achievers Assemblies are held on Fridays when pupils' achievements of the week are celebrated.

Charging and Remissions Policy

The Governing Body has established a principle that parents will sometimes be invited to contribute voluntarily towards the cost of certain educational visits. The school is careful not to over-burden parents inappropriately and the school attempts to keep costs to a minimum. No child will be discriminated against if parents are unable or unwilling to contribute.



Cilffriw Primary School
Ysgol Gynradd Cilffriw
Tel: 01639 630816
Email: cilffriw@npt.school



Inspection of Documents

All our policies - curricular and otherwise are available for you. Any documentation may be inspected and, where appropriate, copied at the school during school hours by arrangements with the Headteacher. Many documents are available for you to view on the school website. If you would like to read any policy please let us know.

School Uniform

School uniform allows a degree of choice allowing for formal or informal preference. School colours are navy sweatshirts and cardigans with white polo shirts with a navy and red tie which is optional. A range of sweatshirts, cardigans, hoodies, polo shirts, fleeces and outdoor coats are available to order on line from Tesco. Also, we are grateful if you make sure that children's shoes are entirely suitable - even small heels are inappropriate at Cilffriw because of all our steps and stairways.

Jewellery

Please will you note that wearing jewellery is not appropriate to the activities which children take part in during the school day. Nothing other than wrist watches and stud earrings will be permitted in the interest of health and safety.

EQUAL OPPORTUNITIES

Every attempt is made to equalise opportunities for all pupils. Individuality is recognised and accepted and discrimination on any grounds is not tolerated. We aim to recognise and celebrate differences in cultures other than ours. We are careful to differentiate according to the needs of pupils and provide support in order to compensate for any difficulties.

LIAISON WITH OTHER SCHOOLS

Excellent links are maintained with Llangatwg Comprehensive and partner primary schools. Headteachers and teachers meet to discuss pupil progress to agree transition plans and to establish a shared understanding. The Year 6 teacher works with partner colleagues to standardise and moderate end of Key Stage Two assessments.

Throughout the year, our senior pupils enjoy sporting occasions with other primaries at Llangatwg.

Teachers frequently meet with partner primary colleagues. This liaison is a valuable resource where colleagues visit each other's schools during afternoon sessions to discuss and share good practice.



Cilffriw Primary School

Pencynor
Cilfrew
SA10 8LF

eMail: cilffriwprimary@npted.org
Phone: 01639 630816

SPORTING ACHIEVEMENTS

The school recognises the importance of fresh air and exercise to the wellbeing of healthy children and when weather permits, advantage is taken of the excellent facilities at our school available at lunchtimes and during after school clubs as well as during games lessons.

Sporting events with partner Primary Schools tend not to be competitive. Instead, football, rugby, netball and athletics meetings among schools now takes the form of a festival where concentration is placed upon promoting the skills needed for excellence.

We place a very high priority on school PE and school sport and after school sports clubs are thriving at Cilffriw on Wednesdays. Four members of staff work with our juniors (Years 3 - 6). After school clubs, each day except Fridays, also provide outdoor play and games if the weather permits.

We regularly meet for informal matches with other schools usually for rugby, soccer or netball. The school has also taken classes to festivals for hockey, cricket and netball. A number of our classes have spent excellent days at the Llandarcy Academy of Sport as a part of our Healthy Schools initiative.

It is our policy to take classes in Year 5 and Year 6 to Neath Leisure Centre to ensure that all children learn to swim.

SCHOOL MEALS

Lunchtime meals are prepared and served on the premises and reflect a healthy balanced diet. Menus are available and these are usually given out each term. Payment is collected on Mondays please. Equal provision is made for children who bring a packed lunch and these children are free to sit with their friends.

We are pleased if you choose food that your children will enjoy eating although we respectfully request that healthy options are chosen. Please do not send fizzy drinks or cans. Reception, Years 1, 2, 3 children eat between 12-12.30, Junior sitting is from 12.20 - 12.45. Our support staff are all on the duty rota throughout lunchtime. This ensures that children are well looked after both when eating and playing. The Headteacher and Deputy Headteacher are also on duty during lunchtimes.



Cilffriw Primary School
Ysgol Gynradd Cilffriw
Tel: 01639 630816
Email: cilffriw@npt.school



EXTRA CURRICULAR ACTIVITIES

Clubs and activities are encouraged at Cilffriw. Throughout the year, Netball Club takes place on Mondays for junior pupils. Sunshine Club is on Tuesday after school and is a club run by local churches. Sports Club for junior pupils takes place after school on Wednesday with activities ranging from netball, football, cricket, athletics, rounders, etc. After school activities end at 4.20 p.m.

AFTER SCHOOL CARE: AVAILABLE MONDAY - FRIDAY

We are working with Ty Plant Childcare to establish a high-quality afternoon nursery and after school care. This is opening in October 2023.

COMPLAINTS

If you have any complaint about any aspect of your child's education, please contact Mr. Mark Quin, the Headteacher, immediately. If you are not satisfied after these discussions, you are invited to contact the Chair of Governors, Mr. Craig Storey via the school on 01639 630816, or on Cilffriw@npt.school. A copy of the Complaints Procedure is available from the office or alternatively on the school website.

TIMES OF THE SCHOOL DAY

Morning Session	8.50
Morning break	10.30 - 10.50
Lunch break	12.00 - 1.00
Afternoon Session	1.00 - 3.20

Nursery Sessions

Nursery opens at 8.30 and closes at 11.30



Cilffriw Primary School

Ysgol Gynradd Cilffriw

Tel: 01639 630816

Email: cilffriw@npt.school



PARENTAL LINKS / REPORTING TO PARENTS

Parents are encouraged to maintain a close relationship with school. We request that every parent help with homework as this is greatly appreciated from the earliest days of sharing a book with your nursery child.

The every-day contact, essential in the Early Years and Key Stage 1, tends to decrease as pupils gain in independence. Formal parent/teacher open evenings take place in February/March. Comprehensive written reports are presented during June/July. Please do not hesitate to contact the school if you have any query or concern at any time - the closer the partnership between parents and teachers the more our children will benefit.

CILFFRIW PARENT TEACHER ASSOCIATION

We are fortunate to have an extremely hard-working and dedicated PTA in Cilffriw. Parents are encouraged to become actively involved with Cilffriw PTA, certainly not only to raise funds for school but to get to know other parents and staff and to put your ideas forward in order to contribute to and improve our school. Meetings are very informal and usually take place on Friday mornings in the staffroom. We really welcome fresh faces and ideas please. The PTA noticeboard is outside the main school entrance.

ROUTINE PROCEDURES

Labelling

We appreciate it if every article of outer clothing is clearly labelled. Mislaid articles of clothing present a real problem if unnamed. Please let us know if clothes are missing. We find that clothes are fairly frequently mislaid but very rarely lost.

Headlice

Headlice can be such a headache! Please will you check frequently as classrooms provide ideal breeding grounds and let school know if your child picks them up. There is no stigma, really, teachers pick them up also. The Health Authority suggest frequent washing of hair, then combing thoroughly after conditioner with a metal tooth or dust comb. We find that one of the most effective deterrents is to tie back long hair securely or plaited.

Snacks

Pupils are asked to bring a healthy snack of fruit at breaktime. 1/3rd pint of cold full cream milk is available daily for nursery, reception and infant pupils and often offered to older pupils also.



Cilffriw Primary School
Ysgol Gynradd Cilffriw
Tel: 01639 630816
Email: cilffriw@npt.school



P.E. Clothes

We should appreciate a gym bag with shorts and T-shirt to be left in school. We request that if possible these are in line with school colours please - navy shorts and white T shirt. It is essential that all pupils change for P.E.

We prefer indoor activities in the hall to be carried out with bare feet. For outdoor games, trainers and suitable kit is required including a track suit in the winter months please. Again we would appreciate if these are predominantly navy and white if possible.

.....AND FINALLY

We are really pleased with the high quality, all-round, education and care we offer our children at Cilffriw. Our aim is that they leave us as skilled and confident, able pupils, well prepared for the challenge of secondary education and for life.

With this in mind, we respectfully ask you to remember that. .

Every child is different.

They look different.

Behave differently.

Develop at different times and at different rates.

Learn at different times and in different ways.

For their sake -

Please don't compare them with others - your children are unique and we celebrate their differences with you.

Please support the school and do remember if you have any queries, however trivial or unimportant you may think they are, do not hesitate to contact us, this is your school.

