

End of the week message

12.06.26

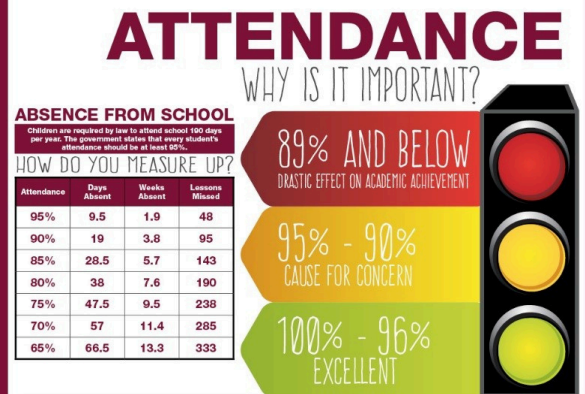


Welcome to our weekly newsletter, here you will see a snapshot of the week along with celebratory posts and dates for your diary.

Attendance

School Attendance Target: 95.01%

School Attendance: 93.95%



Big Questions

Our big question for the next fortnight...

How can we stay safe at the beach?

Article 24 – Right to be healthy and safe.



Yr.6 Cardiff Trip

Year 6 pupils thoroughly enjoyed their residential trip to Cardiff, packed full of memorable experiences and exciting activities. Highlights of the visit included exploring the fascinating Big Pit, enjoying a fun-filled session of ten-pin bowling, and making a splash during a swimming trip. The adventure continued with an exhilarating speed boat ride and a behind-the-scenes tour of the iconic Principality Stadium. To round off a fantastic few days, the pupils also stopped at the Royal Mint on their journey home. It was a truly unforgettable trip, full of smiles, laughter, and lasting memories!



INSET

A gentle reminder that Monday 15th June is an INSET day. The school will be closed to all pupils on this day. Thank you for your continued support.



Sports Day ~ Summer Fair



SPORTS DAY



24.06.2026

The morning session will be for Years 3–6. Gates will open at 9:15am for a 9:30am start.

The afternoon session will be for Nursery to Year 2 pupils, with gates opening at 12:15pm for a 12:30pm start.

Following Sports Day, we will be holding our Summer Fete, and we warmly invite all families to stay and join us for a fun-filled afternoon.



Stalls

Pizza making

Live music



YSGOL HAFAN Y MÔR

SUMMER FAIR

Face Painting

Raffle

June 24th

15.00 – 17.30

Tombola

Ice cream

New for 2026 –

Teacher dunk tank!!!

Stars of the Week



Congratulations to Tommy, Rowen, Naomi, Efan, Maddox, Theo and Tayo for being our stars of the week 12.06.2026!

Hwb Champions

SpellBlast

Yr.2 – Primrose
Yr.3 – Maximus
Yr.4 –
Yr.5 -
Yr.6 -

J2NumberBlast

Henry
Tirzah / Reuben
Jack



Our Welsh Speaking Champions

Celebrating the efforts of the pupils who do their very best to speak Welsh



Reception - Eden
Yr.1 - Cameron
Yr.2 - Nevaeh
Yr.3 - Cillian
Yr.4 - Lula
Yr.5 -
Yr.6 -

Next Week

Monday- 15.06.26	<ul style="list-style-type: none"> • INSET - School closed to all pupils • Transition Week Year 6 Ysgol Bro Preseli
Tuesday - 16.06.26	<ul style="list-style-type: none"> • Physical Education for Years 3-6. • Sports Club for Yrs.3-6 - 3.15pm - 4.15pm • Transition Week Year 6 Ysgol Bro Preseli
Wednesday 17.06.26	<ul style="list-style-type: none"> • Muddy Wednesday Nursery - Yr. 2 • Coding/Numeracy Club - Yrs.3-6 • Performance Club - Yrs. 3-6 • Yr.5 Swimming • Transition Week Year 6 Ysgol Bro Preseli
Thursday - 18.06.26	<ul style="list-style-type: none"> • Brass lessons • Physical Education for Nursery - Yr. 2 • After School Sports club for Years 1 and 2 - 3.15pm - 4.15pm • After School Netball club - Yrs 4 & 5 - 3.15pm - 4.15pm • Transition Week Year 6 Ysgol Bro Preseli
Friday - 19.06.26	<ul style="list-style-type: none"> • Fantastic Friday Yrs 3-6

<http://www.ysgolhafanymor.cymru/home/calendar/>

Please use the link above to view future dates. This is the best way for parents to see dates and what is happening at school.

Absence

Please find below the link for the absence request form. We kindly ask that this form is completed if your child/ren is absent.

<https://docs.google.com/forms/d/15ZT3HRC9HMgkVjIrtDvpYQstpfMnPni4zpoqxGUBSQ/edit>

Medicine

Please find below the link for the administration of medicine request form. We kindly ask that this form is completed if your child/ren requires medicine at school.

<https://forms.gle/SgryLRHGLaEQp9qm9>

Additional Information

Information regarding holiday dates and INSET days (school closure days). Please note that these have been updated and are on the school website calendar

<http://www.ysgolhafanymor.cymru/home/calendar/>

INSET (school closed for all learners) 15.06.2026

Summer break 20.07.2026 – 31.08.2026

INCLEMENT WEATHER

I would like to remind all parents of the procedures for inclement weather and school closure. Updates relating to school closures or other alerts can be found on the following pages:

www.pembrokeshire.gov.uk/alerts

You can register for alerts by creating your own account by using the following web address:

<https://myaccount.pembrokeshire.gov.uk/>

You can register for alerts by creating your own account by using the following web address:

www.facebook.com/PembrokeshireCountyCouncil

www.twitter.com/Pembrokeshire